

Business of Regenerative Medicine Asia Pacific:
Impacts and lessons from COVID19

BRMAP WEBINAR PROGRAM

BRMAP webinar hosted by CCRM Australia and the NSW
Stem Cell Network

MAY 14TH 2020 | 12 PM



CCRM AUSTRALIA

CCRM Australia is an Australian not-for-profit organisation supporting the development of foundational technologies to accelerate the commercialisation of regenerative medicine products and therapies. CCRM Australia's focus is to bridge the commercialisation gap through a network of scientists, entrepreneurs, academic institutions and industry partners and address bottlenecks in the industry.

CCRM Australia is modelled on the highly successful CCRM in Canada and is legally separate to CCRM. As a member of the Global CCRM network, CCRM Australia is a partner to a leading-edge industry consortium. CCRM Australia is supported by MTPConnect and the Victorian State Government.

NSW STEM CELL NETWORK

The NSW Stem Cell Network is a professional community with an interest in the potential of stem cells to improve the human condition. Stem cell therapies underpin regenerative medicine based technologies.

The Network brings together the scientific, health and medical research communities, the higher education sector and business with the goal of promoting growth and innovation to achieve positive health outcomes for the people of NSW and globally. Our work encompasses science, medicine, ethics, law, business and public awareness of stem cells and regenerative medicine.

Since its establishment in 2002, the Network has pursued its goals, successfully conducting regular workshops, seminars, conferences and courses that allow the knowledge sharing and professional skills development as well as embarking on collaborative research and commercial initiatives. The NSW Stem Cell Network has received infrastructure support from Diabetes NSW.

**Business of Regenerative Medicine Asia Pacific:
Impacts and lessons from COVID19**

SPEAKERS

MAY 14TH 2020 | 12 PM

BUSINESS OF REGENERATIVE MEDICINE ASIA PACIFIC WEBINAR

The impact of COVID-19 and what we can do for the sector NOW!

Dr Michael May
President & CEO
CCRM



Commercializing
Living Therapies



BUSINESS OF REGENERATIVE MEDICINE ASIA PACIFIC WEBINAR

The impact of COVID-19 and what we can do for the sector NOW!

Dr Panfeng Fang
Vice President & CTO
Eyecure Therapeutics



Commercializing
Living Therapies



BUSINESS OF REGENERATIVE MEDICINE ASIA PACIFIC WEBINAR

The impact of COVID-19 and what we can do for the sector NOW!

Professor John Rasko AO

Head of Department, Cell & Molecular Therapies
Royal Prince Alfred Hospital



BUSINESS OF REGENERATIVE MEDICINE ASIA PACIFIC WEBINAR

The impact of COVID-19 and what we can do for the sector NOW!

Brent McPherson

(Logistician) National BD Manager
World Courier Ltd
Melbourne, Australia

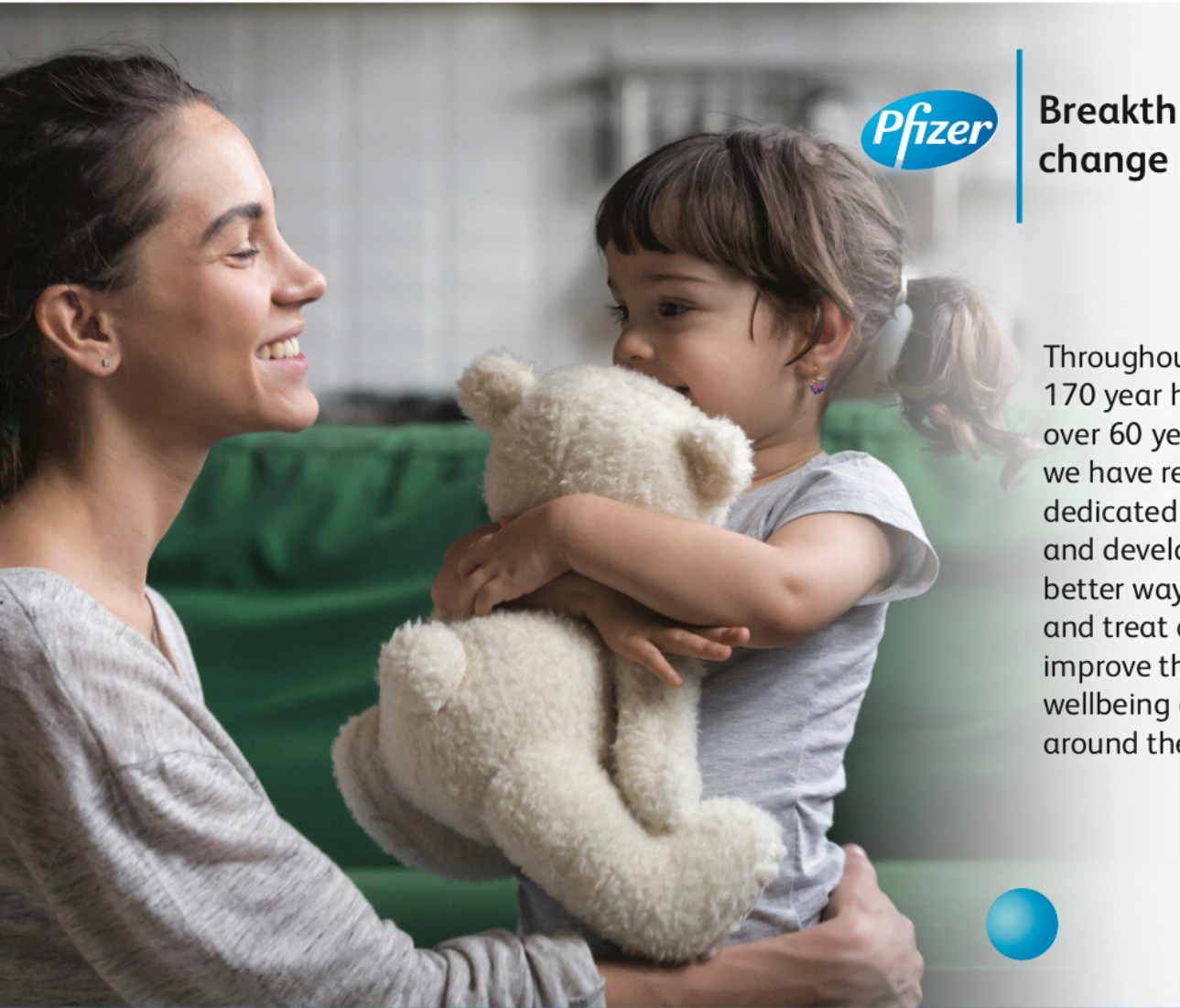


Business of Regenerative Medicine Asia Pacific:
Impacts and lessons from COVID19

SPONSORS

MAY 14TH 2020 | 12 PM

PFIZER

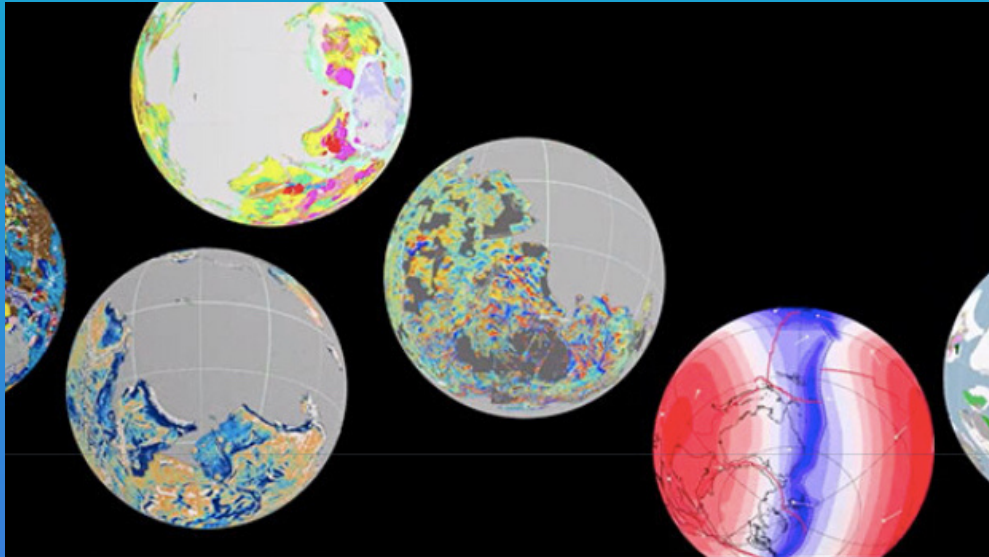


**Breakthroughs that
change patients' lives™**

Throughout Pfizer's 170 year history, and over 60 years in Australia, we have remained dedicated to discovering and developing new and better ways to prevent and treat disease, and improve the health and wellbeing of people around the world.

For more information visit www.pfizer.com.au

NSW GOVERNMENT



The Office of the NSW Chief Scientist & Engineer invites you to

**THE NSW SCIENCE & RESEARCH
BREAKFAST SEMINAR SERIES
FIRST LIVE STREAMED EVENT**

Wednesday 20 May 2020

Professor Dietmar Müller presents

The Future of Geoscience in Australia

For further information contact

events.rsvp@chiefscientist.nsw.gov.au



**Office of the
Chief Scientist
& Engineer**

EYECURE

BUSINESS OF REGENERATIVE MEDICINE ASIA PACIFIC WEBINAR

The impact of COVID-19 and what we can do for the sector NOW!

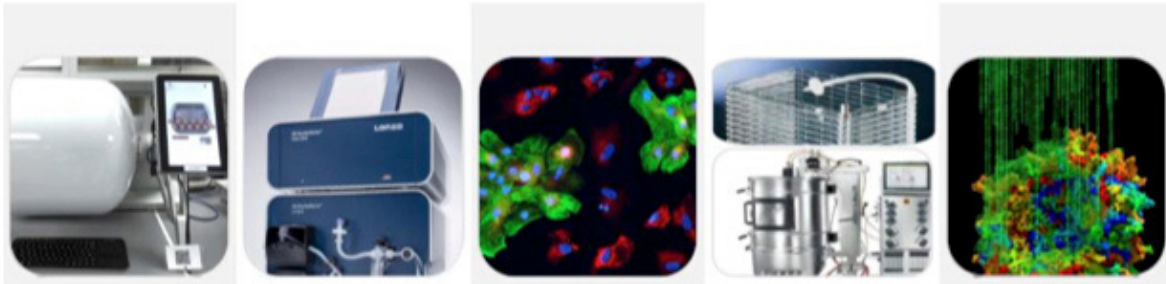
Dr Panfeng Fang
Vice President & CTO
Eyecure Therapeutics



EyeCure
江苏艾尔康

LONZA

Lonza  **PEPROTECH**
OUR SUPPORT, YOUR DISCOVERY



TheraPEAK GMP Cell therapy media
CRISPR delivery tools – fast and efficient
Regenerative medicine tools
Cytokines and GF – Cell culture & PeproGMP
ADMETox DMPK
Cell Analysis Products
Primary cells and optimised media
MycoAlert mycoplasma detection
Endotoxin Detection systems
Products for Exosome Research

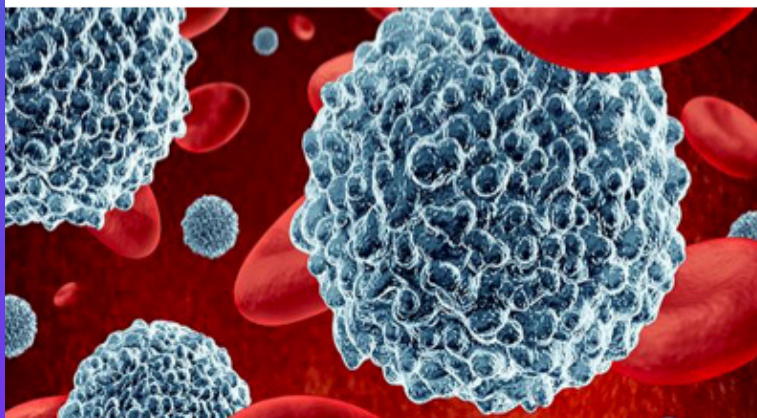


X-VIVO™
Medium

Lonza Australia Pty Ltd/PeproTech Australia

Phone: 1 300 657 508

Email: bioscience.australia@lonza.com



BIOINTELECT



Developing and commercialising cell and gene therapies (CGTs) across the value chain is a challenging process.



- Novel and unique pre-clinical and clinical development
- Risk benefit profile for CGTs still evolving
- Technologies evaluated for and assigned to broader indications
- Numerous country-specific and international opportunities available
- CGT-specific operational needs including supply chain, manufacturing and quality assurance system
- Fragmented stakeholder requiring tailored engagement plan
- Uncharted regulatory and reimbursement pathways



Our experienced team can assist you with every step along the development pathway.

Biointelect brings a 360-degree view that encompasses clinical development, commercialisation and market entry, to help guide a forward-thinking strategy at all stages of the development pathway.

In pre-clinical and clinical phases, we provide:

- Grantsmanship
- R&D project management
- Pitch deck for investors
- Route to market with regulatory pathway
- Expert research with clinical & scientific KOLs (advisory board to inform clinical trial and clinical endpoints), cross-functional industry experts (including manufacturing & supply chain) and patient advocacy groups
- Financial modeling to inform decision making

In the pre-launch phase we provide:

- New Product Planning and Go-to-Market strategies including development of cross-functional team and definition of the supply chain requirements
- Strategic pricing and market access, including innovative pricing models, evidentiary gap analysis, and evidence generation

Contact us today for an initial consultation

Sydney

Guillaume Herry, Director
+ 61 411 315 806
1300 800 984
gherry@biointelect.com

Melbourne

Patricia Vietheer, Consultant Manager
+ 61 409 265 474
1300 800 984
pvietheer@biointelect.com



IHMRI

Working together for better health

Established in 2008, the Illawarra Health and Medical Research Institute (IHMRI) is a not-for-profit charity that supports health and medical research in the Illawarra-Shoalhaven region of New South Wales, Australia.

We provide our affiliated researchers with a range of services to help them find new insights into disease and illness, devise prevention strategies, and develop more effective treatments and health care services. Due to the high incidence of chronic and age-related conditions in our region, such as diabetes and dementia, we encourage the community to take part in ground-breaking research through clinical trials.

We promote and champion our researchers in our communities and beyond to help raise awareness of their vital work and gather philanthropic support. As an independent Medical Research Institute (MRI) we also help our partners, the University of Wollongong and the Illawarra Shoalhaven Local Health District, advance health and medical research in our region.

